

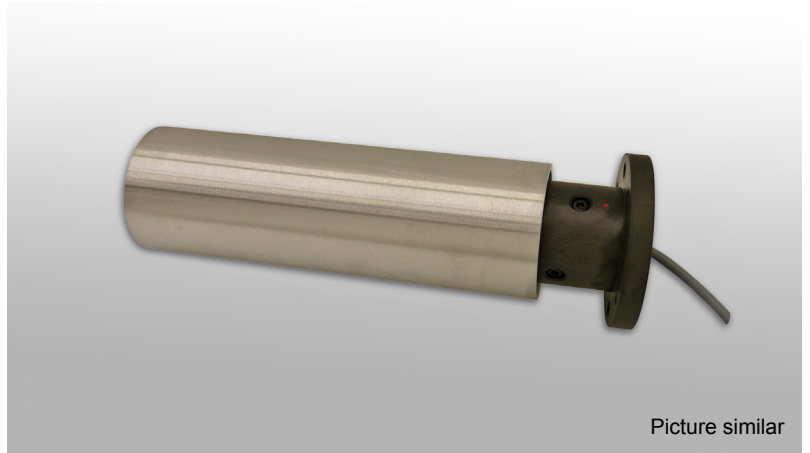
Measuring Roll MWFM

Scope of Supply

Complete single sided measuring roll with integrated force sensor and 5 m cable (PVC), axial output with cable connection T: cable gland, straight

Additional Options

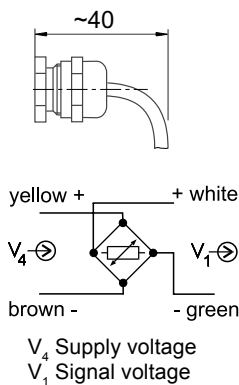
- R: Radial cable output
- F: For use in explosive areas, incl. J-Box



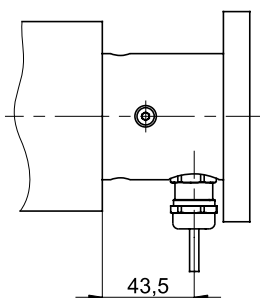
Picture similar

Connections

Variant T



Option R



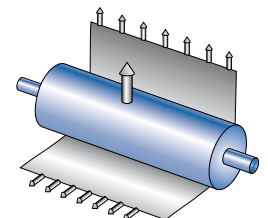
Special Features

- Cantilevered narrow web tension measurement roll
- Nominal forces from 100 to 1000 N
- Simple installation, supplied ready for connection
- Cost effective compact design

The measuring roll is especially suited for web tension measurement in narrow web machinery with cantilevered narrow web rolls.

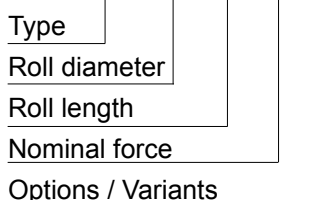
The MWFM is especially designed for applications in restricted space conditions or where a good access to the processed material is necessary. The MWFM is particularly well suited for new machine designs with single-sided machine frames.

The measuring roll consist of the cantilevered bearing-mounted roll with built-in force sensors and the mounting flange. Thus the measurement roll can be mounted directly onto the machine frame in line with the desired the measurement direction.



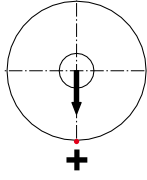
Ordering Example

MWFM90-250-100-R



Technical Data	Values (%) based on nominal force
Nominal force F_{nom} (Measuring range)	100*, 200, 500, 750, 1000 N
Max. operating force	150 %
Absolut max. force	300 %
Max. lateral force	100 %
Nominal rating	1 mV/V *at 100 N F_{nom} 0,5 mV/V
Combined error	0,5 %
Nominal ambient temperature	+10... +60° C (+50...+140° F)
Operational temperature range	-10 ... +70° C (14... 158° F)
Nominal resistance of strain gauge bridge	700 Ω
Bridge supply voltage	10 VDC
Sensor cable (standard)	PVC, grey, 4 x 0,34 mm ²
Protection class	IP54

Mounting
The red dot indicates the positive measuring direction of the force sensor. The installation direction depends on the web tension geometry.



Roll length [mm]	250, 320, 400	Other length on request
Material flange	Steel	
Material roll shell	Aluminum, belt grinded, 8 μ m	Other surfaces or materials on request, e.g. - hardcoated / anodized - plasma coated - hard chrome plated

Dimensions in mm (1 mm = 0.03937 inches)

